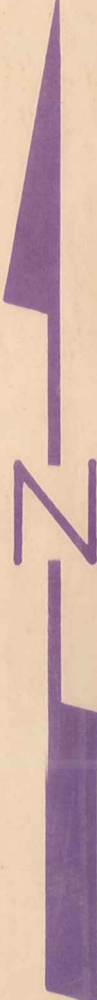


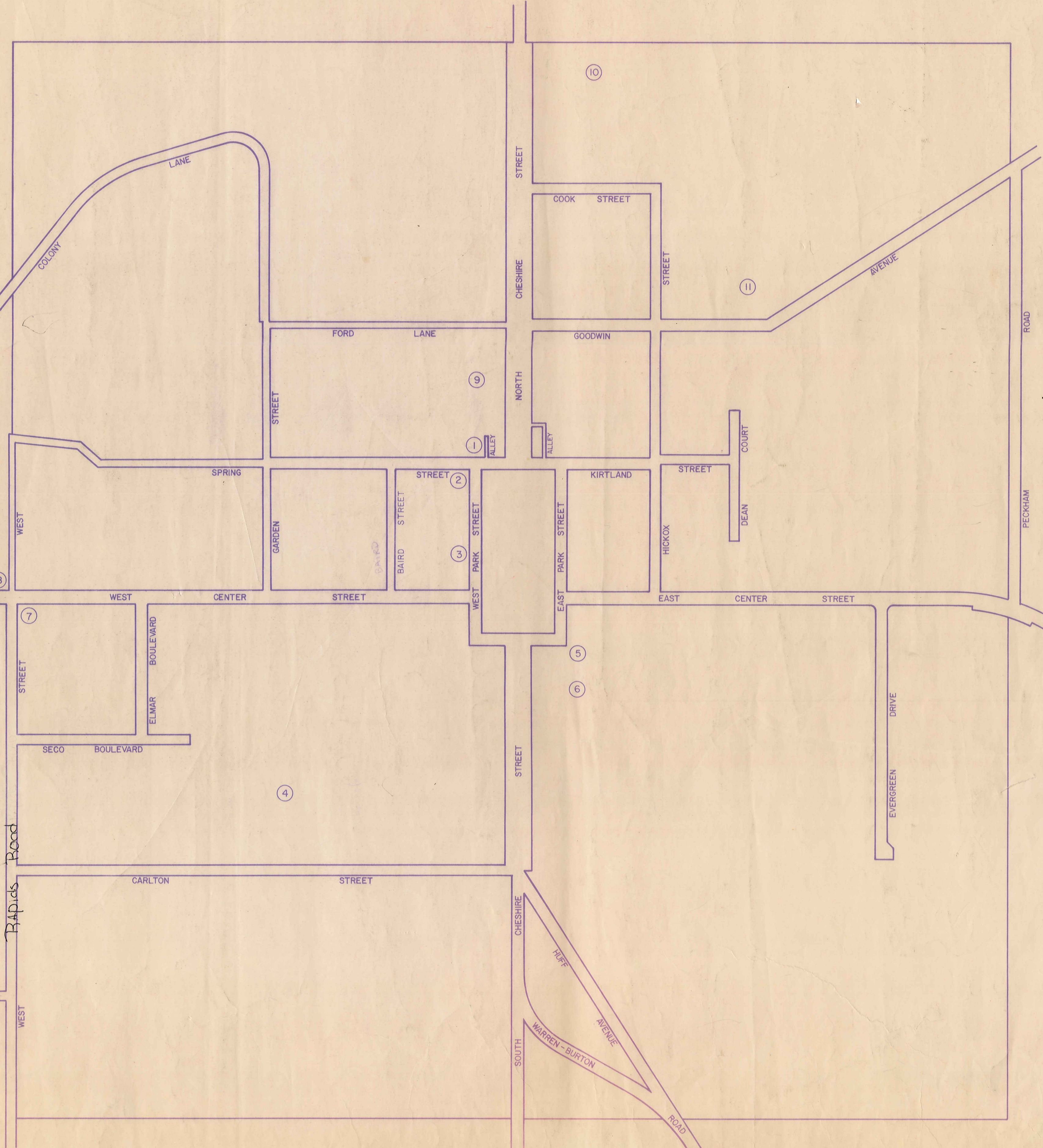
MAP OF BURTON VILLAGE

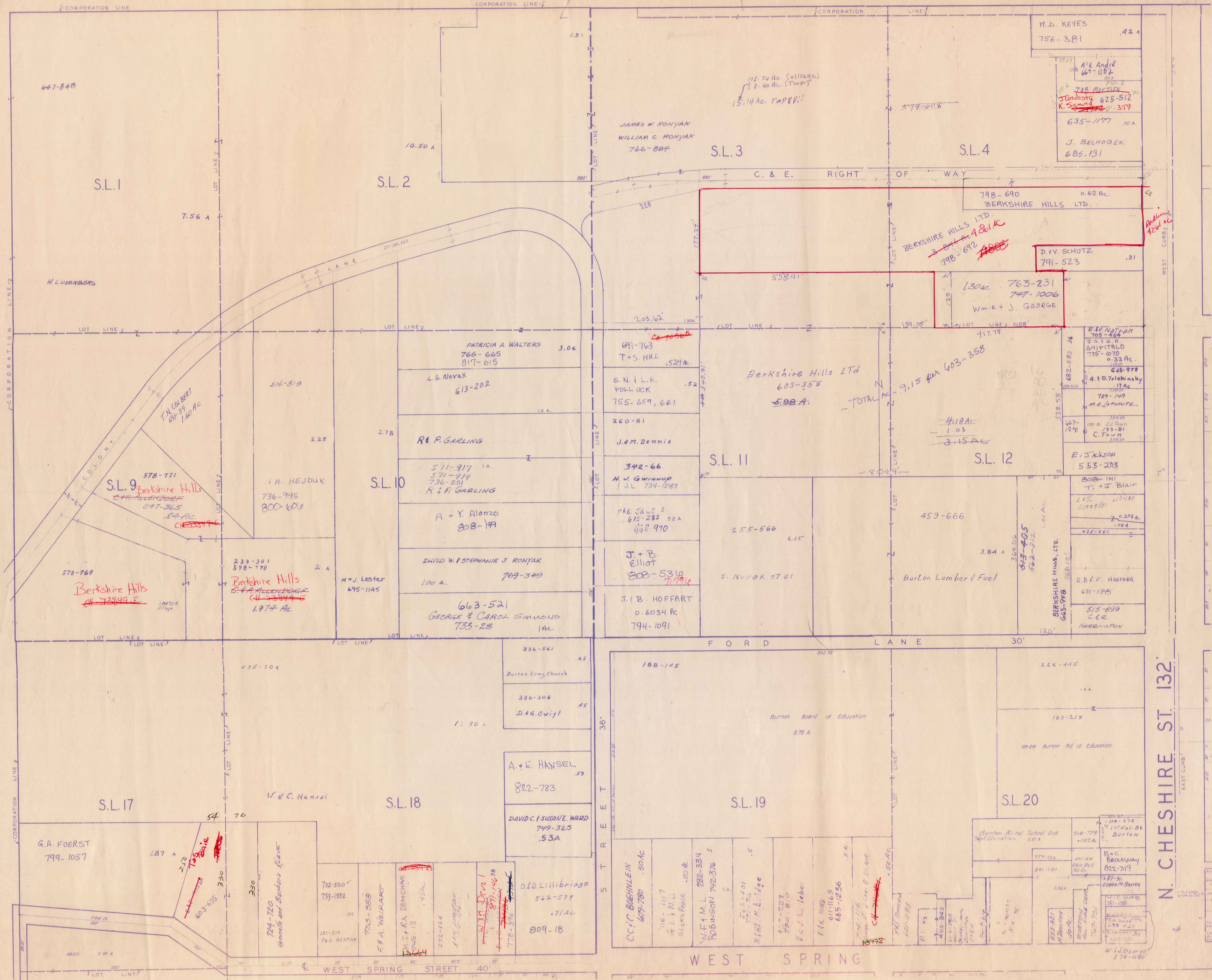


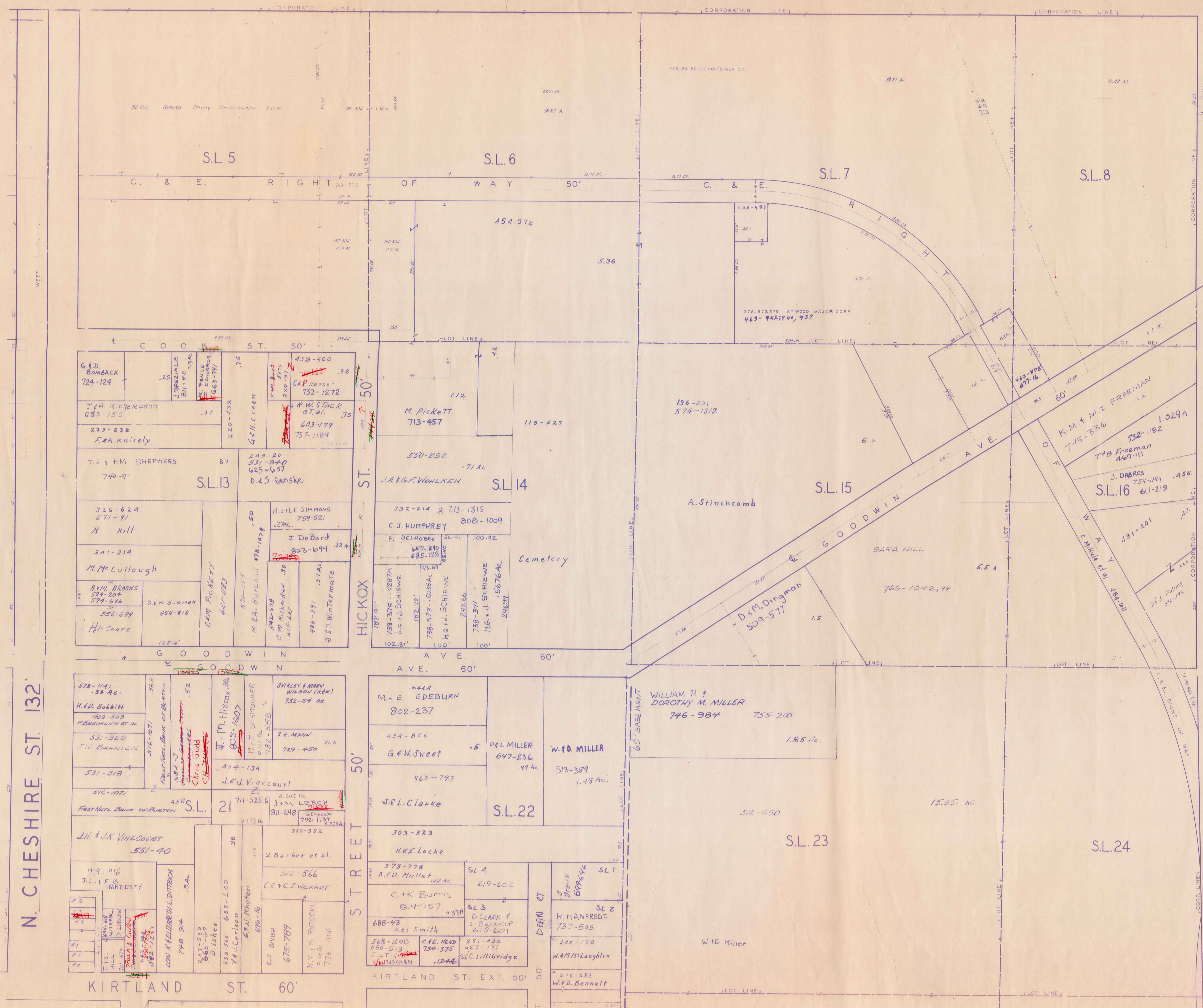
SCALE 1" = 300'
 0 100 200 300

POINTS OF INTEREST

- ① BURTON VOL. FIRE DEPT.
- ② BURTON CONG. CURCH
- ③ BURTON PUBLIC LIBRARY
- ④ BURTON ELEM. SCHOOL
- ⑤ GEAUGA HISTORICAL SOCIETY
- ⑥ FIRST LUTHERN CHURCH
- ⑦ STATE HIGHWAY DEPT.
- ⑧ CHRISTIAN SCIENCE CHURCH
- ⑨ BERKSHIRE HIGH SCHOOL
- ⑩ GEAUGA COUNTY FAIRGROUNDS
- ⑪ BURTON CEMETARY
- ⑫ LOWER CEMETARY
- ⑬ VILLAGE SEWAGE TREATMENT PLANT

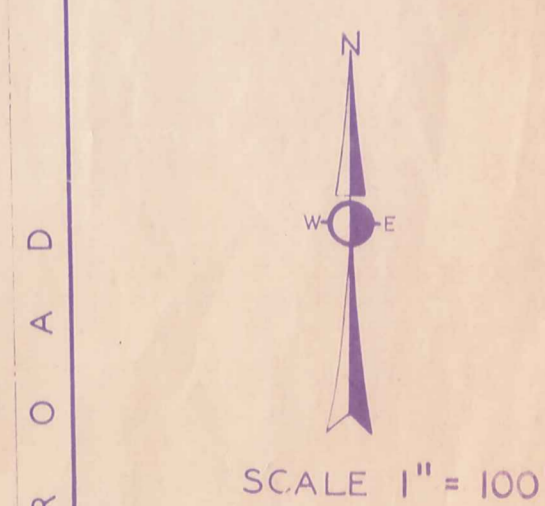






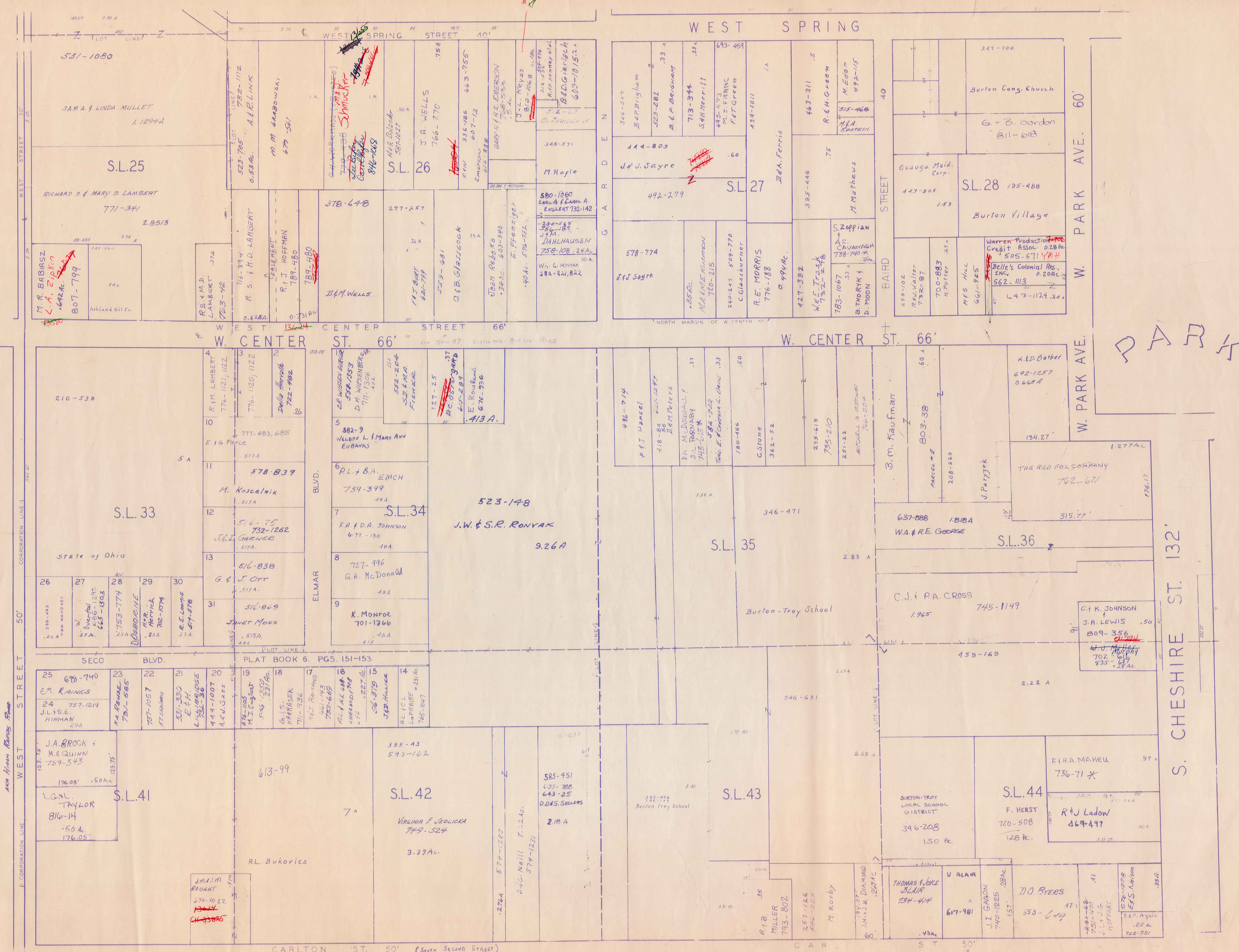
1. J. VINECOURT 786-883, 568-5/3
 2. W. R. ... 72943, 582-978
 3. W. R. ... 335-239
 4. V. Louise Temp. Co. 316-157
 5. H.C. Hill 571-11 553-1032
 6. T.M. & S.L. HILL 862-271

N. CHESHIRE ST. 132'



JAN. 1, 1989

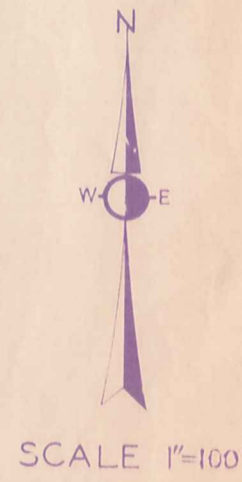
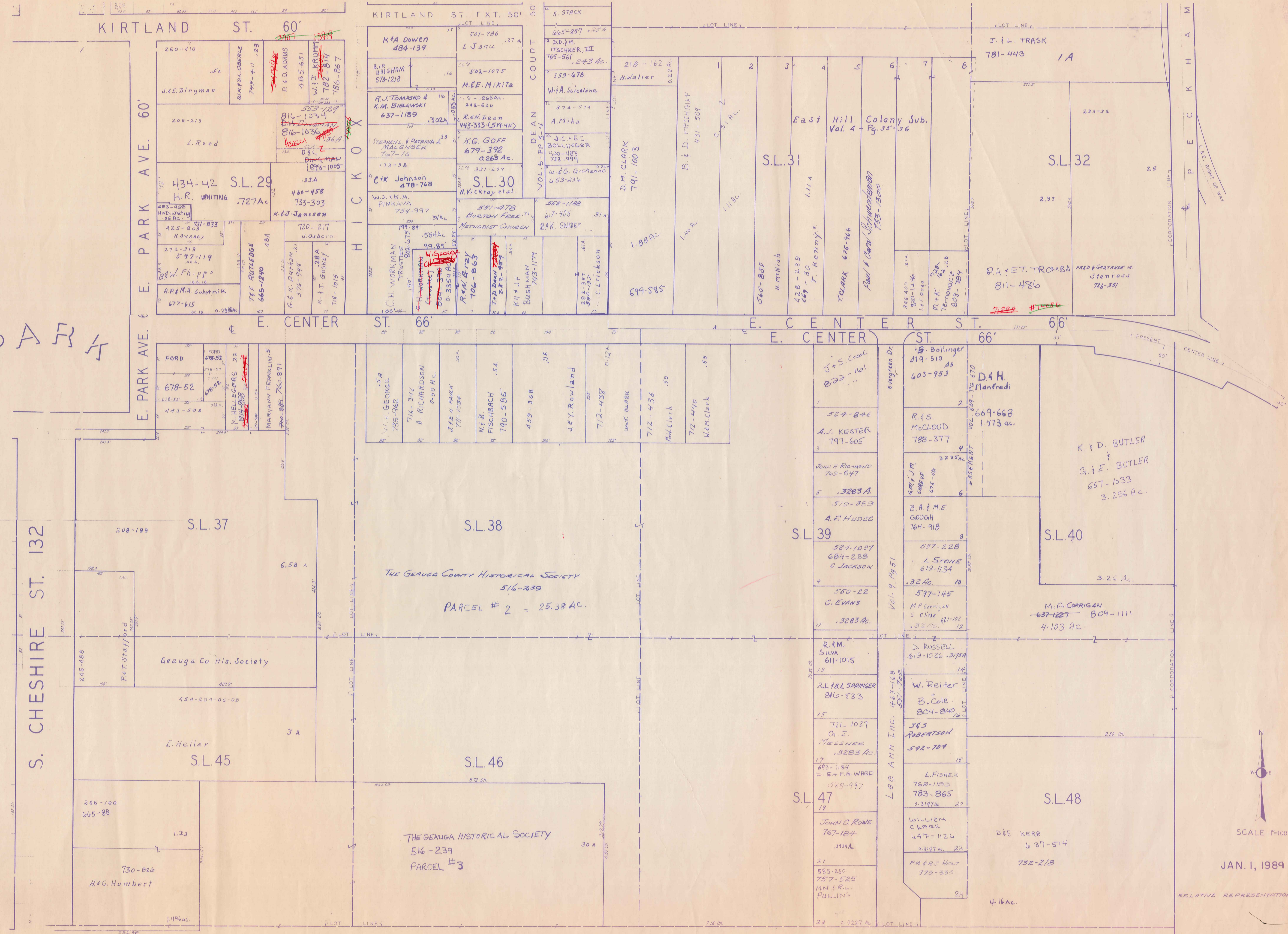
BURTON VILLAGE



JAN. 1, 1989

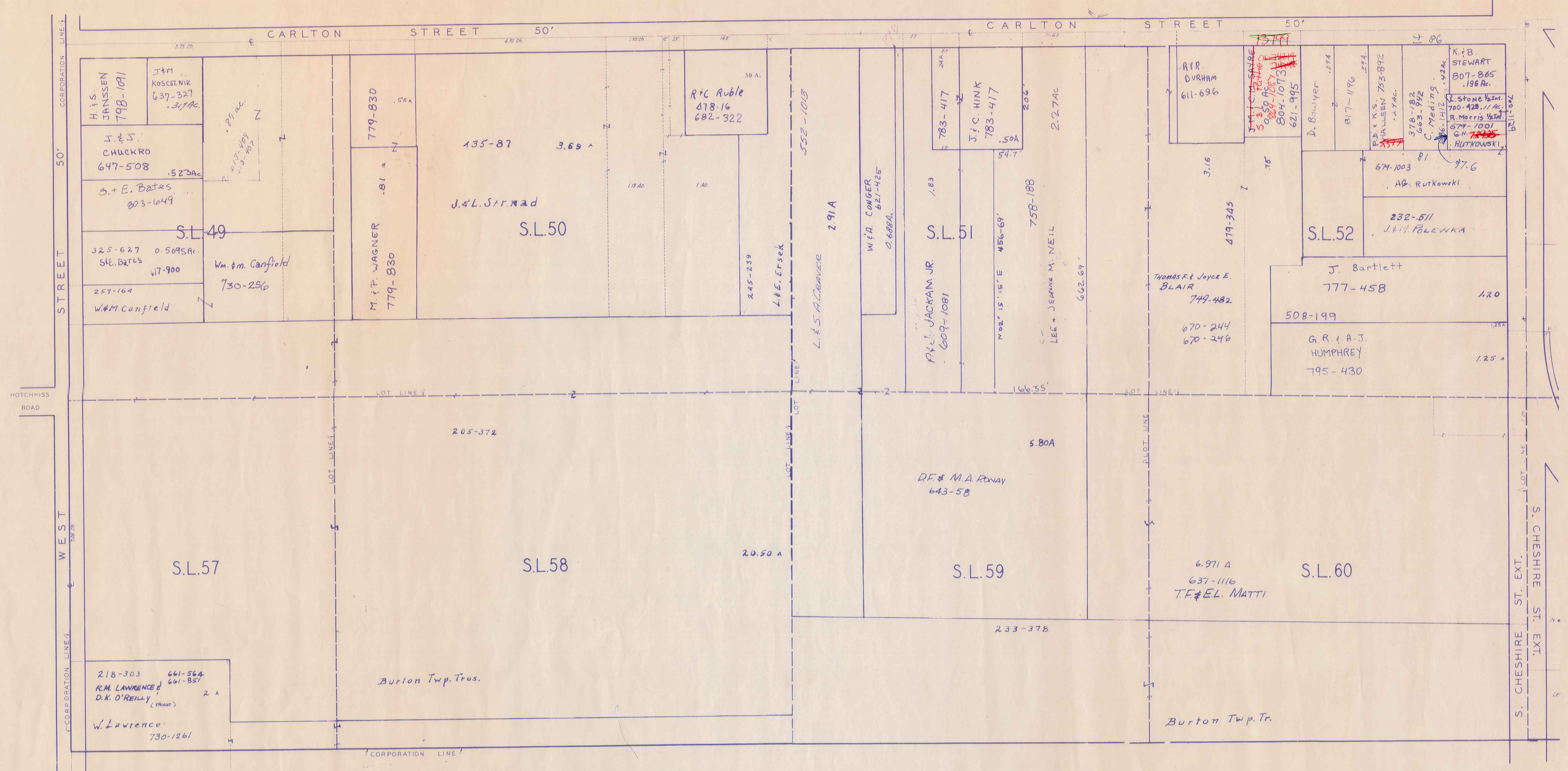
RELATIVE REPRESENTATION

PARK



JAN. 1, 1989

RELATIVE REPRESENTATION



SCALE 1"=100'

JAN. 1, 1989

RELATIVE REPRESENTATION

D.S. LITTLE &
E.R. BOGIELSKI
738-16

2 Ac

2 Ac.
550-640

W & R
JACKSON
480-500
0.33 Ac

D.S. LITTLE &
E.R. BOGIELSKI
738-224

P.O. RZESZOTARSKI
742-440

1.67 Ac

J & D BAUMGARTNER
763-158

0.87 Ac

D & K NIMIETZ
633-915

0.864 Ac

~~DALE WORKMAN (TRUSTEE)~~
778-1101

1.212 Ac

~~1111 Ac~~

W.S.E. HINMAN

B. SMERGLIA
782-427
1.571 Ac

CORP. LINE

1.52 Ac
E. CHITTLE
778-1126

556-341

E. CHITTLE
778-1126

0.78

G.R. & N. FARROW
756-1154

0.51 Ac

44

E CHITTLE
479-306
778-1123
9.31 Ac

BIGELOW (MILL) ROAD

T. & N. HERRICK
0.75 Ac
663-139

778-1123

D. & M. MARTIN
589-669

0.57A

CORP. LINE
HOTCHKISS ROAD 60'

HOTCHKISS ROAD

50' ROAD RAPIDS



SCALE 1"=100'

JAN. 1, 1989

RELATIVE REPRESENTATION